

Customer:

Address:

Sample ID: GUM-09722-B1 (1)

Matrix: Edible

Labnumber: 2200061-01 Total mass or volume per unit (g or mL): 2.5067



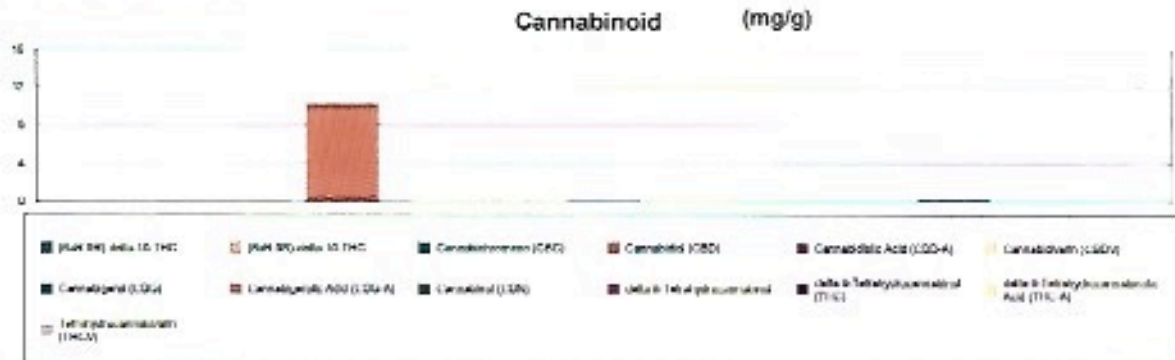
Cannabinoid Profile

Test Conditions: 16°C
 Extraction Technician: SH
 Analytical Chemist: SH

Extraction Date(s)	Analysis Date(s)
4/8/2022	4/9/2022

Cannabinoids (HPLC)	Results			
	LOD (mg/g)	%	mg/g	mg/Gummy
Cannabidiol (CBD)		1.03	10.3	25.8
Cannabidiol (CBD)		1.03	10.3	25.8
Tetrahydrocannabivarin (THCV)	<0.004			
Cannabigerol (CBG)		0.007	0.055	0.163
Cannabidiol (CBD)		1.03	10.3	25.8
Tetrahydrocannabivarin (THCV)	<0.004			
Cannabinol (CBN)		0.0009	0.00859	0.022
Cannabichromene (CBC)		0.009	0.085	0.237
delta-9-Tetrahydrocannabinol (THC)		0.02	0.179	0.450
delta-9-Tetrahydrocannabinolic Acid (THC-A)	<0.008			
delta-8-Tetrahydrocannabinol	<0.008			
(6aR,9S)-delta-10-THC	<0.008			
(6aR,9R)-delta-10-THC	<0.008			
Cannabinoids Total		%	mg/g	
Max Active THC (delta-9-tetrahydrocannabinol)		0.02	0.18	
Max Active CBD		1.03	10.30	
Total Cannabinoids		1.07	10.70	

Following ILSGIA guidelines on uncertainty, Altitude Consulting's uncertainty is calculated to be +/- 2% for all cannabinoids using a coverage factor of 2 (85% confidence interval). Measurement uncertainty has not been factored into reported values. Blank results indicate the compound was below the limit of detection.



Gary Brook - Laboratory Director - 4/11/2022

Reporting Limits will vary based on sample collection weight used for the analysis.

The results of this report are based solely on the sample submitted and cannot be reproduced. Decision Rule: Measurement uncertainty is not accounted for in the reported values. Results are based solely on calculated numbers. Altitude Consulting makes no Statements of conformity. Pesticide, metal, and microbial analysis are subcontracted to ISO 17025 laboratories.