

Certificate of Analysis

Prepared for:

LCJ Herbal Remedies
Ultra Mint Drops/ Tinctures

Product Description: Hemp CBD Tincture 6000mg/100mL MCT, OCBS, OPPT

Invoice Number: 2021-556A

Lot Number: T-28021-B5

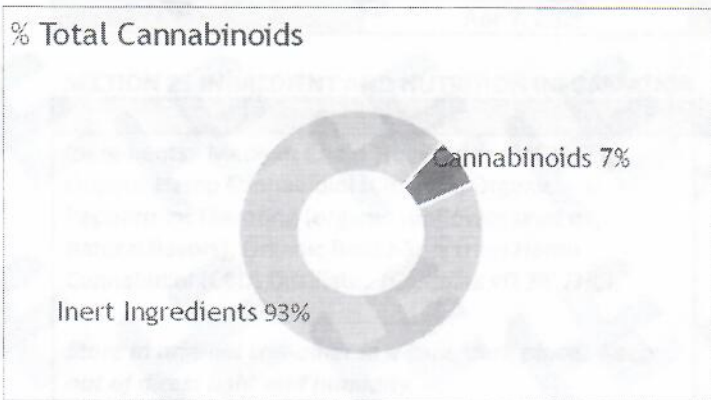
Manufacture Date: Oct 07, 2021

Product Code: T-6000-OCBS-MCT-OPPT-100

Date of Analysis: Oct 11, 2021

Best By Date: Apr 07, 2023

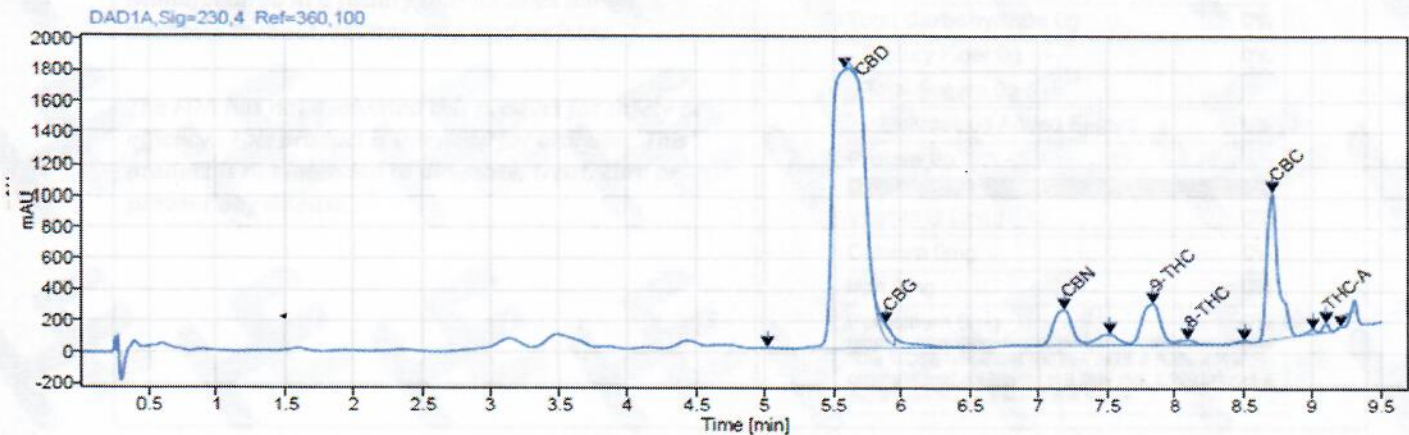
Cannabinoid Potency - Expected CBD: 60.00 mg/mL ± 10%



| | mg/mL | % | LOQ (mg/mL) |
|------------|----------------------------|-------------------|-------------|
| Total CBD: | 64.53 mg/mL | 6.45% | 0.05 mg/mL |
| CBD: | 64.53 mg/mL | 6.45% | 0.05 mg/mL |
| CBDa: | <LOD | <LOD | 0.05 mg/mL |
| d9-THC: | 2.23 mg/mL | 0.22% | 0.05 mg/mL |
| CBC: | 2.36 mg/mL | 0.24% | 0.05 mg/mL |
| CBG: | 0.59 mg/mL | 0.06% | 0.05 mg/mL |
| CBGa: | <LOD | <LOD | 0.05 mg/mL |
| CBN: | 0.80 mg/mL | 0.08% | 0.05 mg/mL |
| CBDV: | <LOD | <LOD | 0.05 mg/mL |
| d8-THC: | 0.24 mg/mL | 0.02% | 0.05 mg/mL |
| THCa: | 0.07 mg/mL | 0.01% | 0.05 mg/mL |
| Density: | 0.952 (kg/m ³) | Specific Gravity: | 0.955 |

*Total d9-THC and CBD are calculated taking into account the loss of a carboxyl group during decarboxylation. The formulas are as follows: $d9\text{-THC} = d9\text{THC} + (\text{THCa} \cdot 0.877)$ $\text{CBD} = \text{CBD} + (\text{CBDa} \cdot 0.877)$
 **Any compounds with results listed as "<LOD" were below the Limit of Detection and were not detected.
 ***LOQ is the limit of quantitation for any given analyte.

Chromatogram



Prepared By: N. Stasi

Operations Manager
Oct 13, 2021

Reviewed By: E. Casey

Formulation and R&D Manager
Oct 13, 2021

Analyzed via HPLC Under These Conditions: Humidity: 28% Temperature: 72.5 °F



ISO 9001:2015 Certificate Number: US4293

Certificate of Analysis test results are based only on the analysis of the product listed in the "Product Description" of this form. Hammer Enterprises, LLC makes no claims as to the efficacy, safety, or other risks associated with any detected or non-detected compounds reported herein. All analyses conducted at Hammer Enterprises, LLC is performed on well-maintained, quality instruments utilizing Good Laboratory Practices and validated methodology. This Certificate may not be reproduced except in full, without the written approval of Hammer Enterprises, LLC. DISCLAIMER: When reviewing certificate ensure watermark is complete and intact. Watermark will present as repeating HE logos diagonally across the entire page. The authenticity of this document is not guaranteed if there is evident modification, blocking, or alterations of the watermark.