

Certificate of Analysis

Prepared for:

LCJ Herbal Remedies

Product Description: Hemp CBD Softgel 25mg/0.5mL OHSO, OCO2, OBSD

Invoice Number: 2022-94A

Lot Number: SG-03422-B2

Manufacture Date: Feb 03, 2022

Product Code: SG-25-OCBS-OHSO-0.5

Date of Analysis: Mar 03, 2022

Best By Date: Feb 03, 2024

Cannabinoid Potency - Expected CBD: 25.00 mg/softgel ± 10%

% Total Cannabinoids

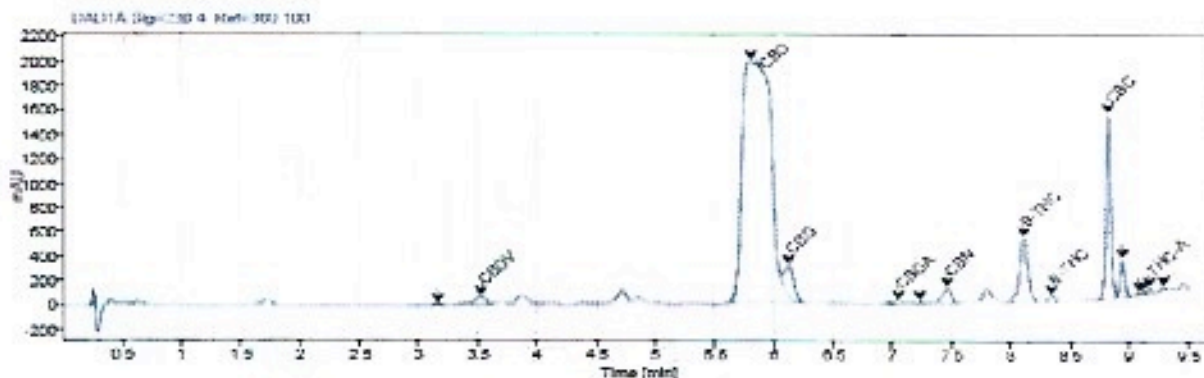


| | mg/ml | % | LOI (mg/ml) |
|------------|------------|-------|-------------|
| Total CBD: | 26.88 mg/g | 2.69% | 0.05 mg/ml |
| THC: | 26.88 mg/g | 2.69% | 0.05 mg/ml |
| CBGa: | <LOQ | <LOQ | 0.05 mg/ml |
| Δ9-THC: | 0.89 mg/g | 0.09% | 0.05 mg/ml |
| CB: | 0.83 mg/g | 0.08% | 0.05 mg/ml |
| THC: | 0.41 mg/g | 0.04% | 0.05 mg/ml |
| CBGa: | <LOQ | <LOQ | 0.05 mg/ml |
| THC: | 0.29 mg/g | 0.03% | 0.05 mg/ml |
| CBGV: | <LOQ | <LOQ | 0.05 mg/ml |
| Δ8-THC: | 0.11 mg/g | 0.01% | 0.05 mg/ml |
| THC-A: | <LOQ | <LOQ | 0.05 mg/ml |

*Total Δ9-THC and CBD are calculated taking into account the loss of a carboxyl group during decarboxylation. The formulas are as follows: Δ9-THC = Δ9THC + (THC × 0.877); CBD = CBD + (CBGa × 0.877).
 **Any compounds with results listed as "<LOQ" were below the Limit of Detection and were not detected.
 ***LOQ is the limit of quantitation for any given analyte.

Density: N/A (kg/m³) Specific Gravity: N/A

Chromatogram



Prepared By: N. Stasi
 Operations Manager
 Mar 15, 2022

Reviewed By: E. Casey
 Formulation and R&D Manager
 Mar 15, 2022



Analyzed via HPLC Under These Conditions: Humidity: 20% Temperature: 76.8 F

ISO 9001:2015 Certificate Number: 054293

Certificate of Analysis test results are based only on the analysis of the product listed in the "Product Description" of this form. Rossmore Enterprises, LLC, makes no claim as to the efficacy, safety or other risks associated with use directed or non-directed compounds reported herein. All analyses conducted at Rossmore Enterprises, LLC, is performed on well-maintained quality instruments utilizing Good Laboratory Practices and validated methodology. This certificate may not be reproduced except in full, without the written approval of Rossmore Enterprises, LLC. DISCLAIMER: When receiving certificate ensure watermark is complete and intact. Watermark will present as repeating 90 degree diagonally across the entire page. The authenticity of this document is not guaranteed if there is evident modification, alteration or alteration of the watermark.